

## CARA MEMISAHKAN SIMILARITY DARI FILE HASIL CHECKER TURNITIN

Siapkan dulu halaman hasil persentase similarity, seperti pada gambar di bawah ini, terus discreenshot:

The screenshot shows a Turnitin similarity report for a document titled "Done Ratna Sari Ayu.docx". The report is displayed in a web browser window. The main content area shows the following data:

Category	Percentage
SIMILARITY INDEX	13%
INTERNET SOURCES	12%
PUBLICATIONS	5%
STUDENT PAPERS	5%

Below the summary, a list of primary sources is provided:

Rank	Source	Percentage
1	eprints.uny.ac.id (Internet Source)	1%
2	repository.radenintan.ac.id (Internet Source)	1%
3	repository.uin-suska.ac.id (Internet Source)	1%
4	repository.uinsu.ac.id (Internet Source)	<1%
5	core.ac.uk (Internet Source)	<1%
6	www.scribd.com (Internet Source)	<1%
7	Submitted to Sultan Agung Islamic University (Student Paper)	<1%
8	journal.unnes.ac.id (Internet Source)	<1%
9	Submitted to Universitas PGRI Semarang (Student Paper)	<1%

The left sidebar of the browser shows a document viewer with page numbers 143, 144, 145, 146, and 147. The page 146 is highlighted, showing a thumbnail of the similarity report. The browser's address bar shows the URL: [digilib-iaкторaja.ac.id/241/1/File%20-%20Ratna%20Sari%20Ayu.pdf](http://digilib-iaкторaja.ac.id/241/1/File%20-%20Ratna%20Sari%20Ayu.pdf). The Windows taskbar at the bottom shows the time as 7:43 AM on 10/9/2023.

Ini hasil screenshotnya, seperti terlihat pada gambar di bawah ini, buatlah satu file

## Done Ratna Sari Ayu.docx

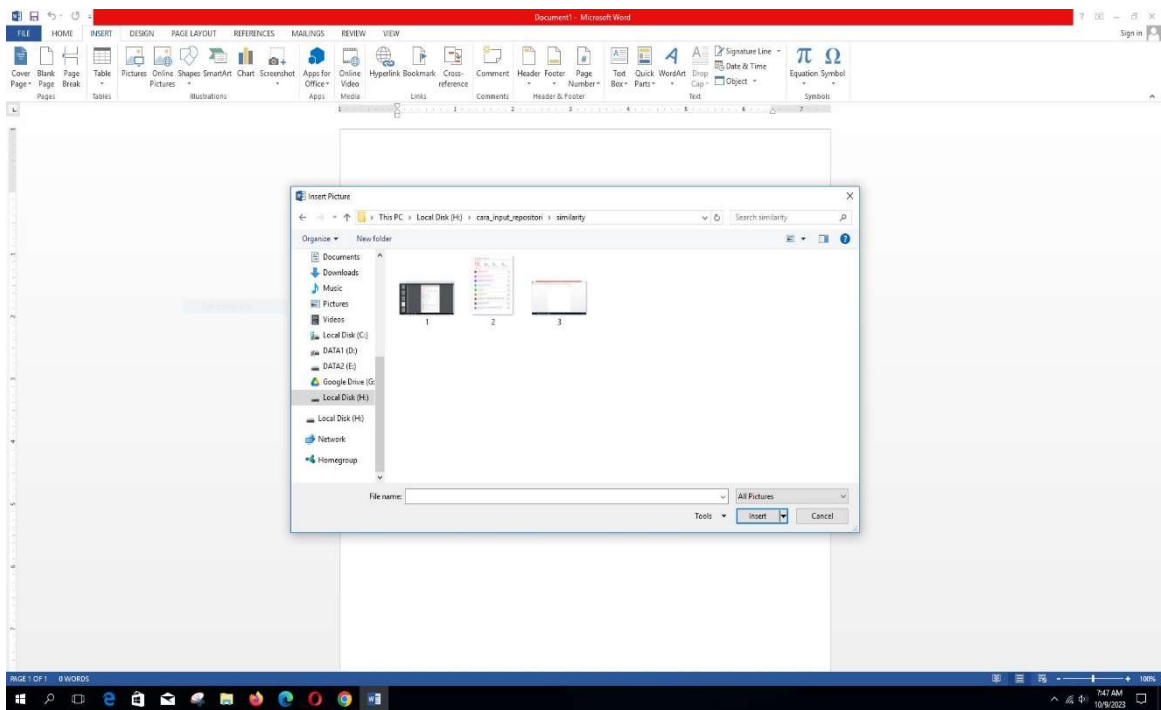
### ORIGINALITY REPORT

<b>13%</b> SIMILARITY INDEX	<b>12%</b> INTERNET SOURCES	<b>5%</b> PUBLICATIONS	<b>5%</b> STUDENT PAPERS
--------------------------------	--------------------------------	---------------------------	-----------------------------

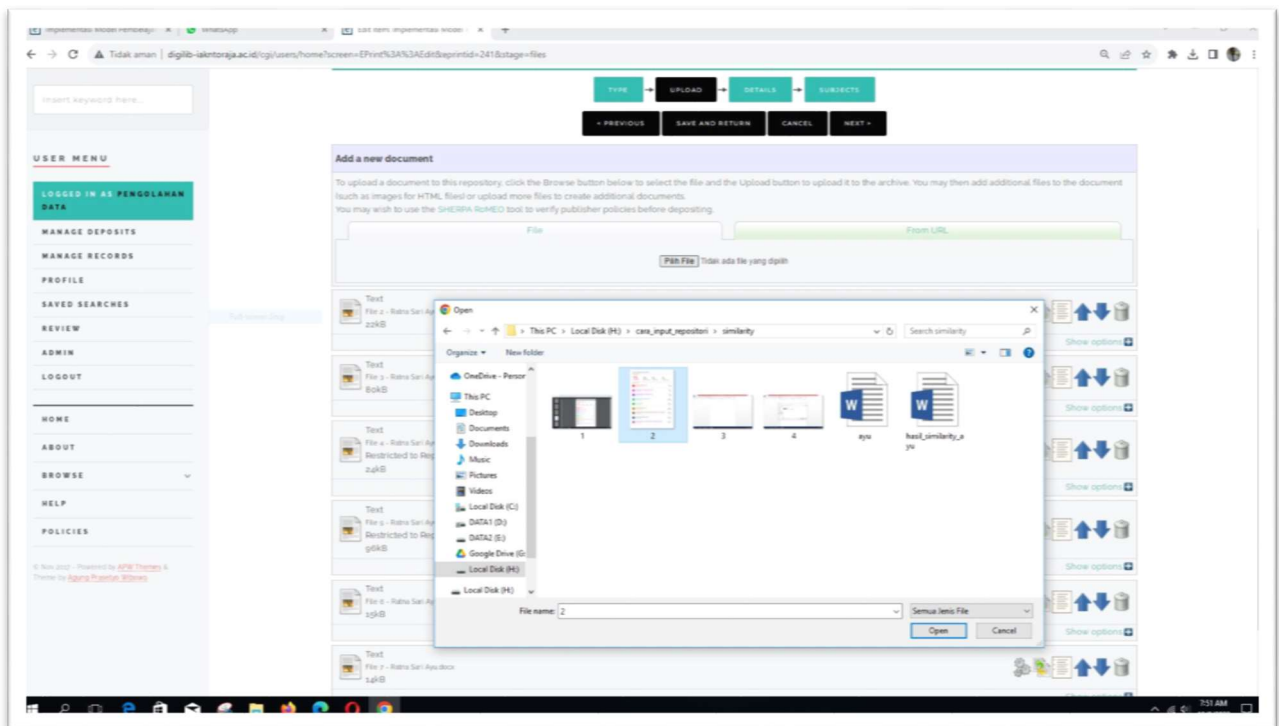
### PRIMARY SOURCES

<b>1</b>	<b>eprints.uny.ac.id</b> Internet Source	<b>1%</b>
<b>2</b>	<b>repository.radenintan.ac.id</b> Internet Source	<b>1%</b>
<b>3</b>	<b>repository.uin-suska.ac.id</b> Internet Source	<b>1%</b>
<b>4</b>	<b>repository.uinsu.ac.id</b> Internet Source	<b>&lt;1%</b>
<b>5</b>	<b>core.ac.uk</b> Internet Source	<b>&lt;1%</b>
<b>6</b>	<b>www.scribd.com</b> Internet Source	<b>&lt;1%</b>
<b>7</b>	<b>Submitted to Sultan Agung Islamic University</b> Student Paper	<b>&lt;1%</b>
<b>8</b>	<b>journal.unnes.ac.id</b> Internet Source	<b>&lt;1%</b>
<b>9</b>	<b>Submitted to Universitas PGRI Semarang</b> Student Paper	<b>&lt;1%</b>

file screenshot ini masukan ke dalam word dan buatkan satu file baru



setelah dalam word itu yang unggah ke repositori



berikut hasilnya setelah diunggah ke repositori

